



CleanTech Alliance
HEALTH TRUST



Employee Benefits that are
Diverse, Convenient and Accessible

Effective January 1, 2023

Contents

About the CleanTech Alliance Health Trust.....	3
Membership Benefits.....	5
Benefits Snapshot	6
Medical Plan	7
Dental Plan	10
Vision Plan.....	12
Basic, Voluntary Life and AD&D Plans	17
Employee Assistance Program	18
Identity Protection Plan	21
About the Administrative Platform.....	22
About the Third-Party Administrator	23
About the Managing General Agent.....	25

About the CleanTech Alliance Health Trust



CleanTech Alliance Health Trust provides employee benefits to companies that develop products and services in the energy, environmental and building sciences industries. Our goal is to provide plan offerings as diverse as our customers and their different industry sectors. We believe that administrating employee health benefits should be easy, convenient and accessible so our members can focus on changing the world.

Insurance through the Health Trust provides exclusive advantages such as a wide array of administrative services, as well as highly competitive group rates through contracts with the largest and most respected insurance carriers in Washington state.

Benefits of joining CleanTech Alliance Health Trust include:

It's Diverse

- Our members represent many different industries; this diversity creates the value in the connections we make that ultimately make a difference in our businesses and the planet.
- Like our customers, we're bold thinkers and look for new ways to develop offerings with consumer-focused tools designed to improve health, support informed decisions and help employees become active participants in their own healthcare.
- The Trust partners with a variety of insurance carriers that help with decision support, price transparency and wellness.
- Covered employees are able to choose from a wide variety of benefit plans that include medical, dental, vision and other ancillary offerings.
- Comprehensive medical plans offer significant first dollar benefits; plan deductibles range from \$200 to \$8,000.
- Flexible pricing strategies are uniquely developed for the clean technology industry and exclusively available through the CleanTech Alliance Health Trust.

It's Convenient

- Enrolling into CleanTech Alliance Health Trust means also becoming a [CleanTech Alliance](#) member. This membership extends to all of your employees and comes with benefits like discounted event pricing, discount purchasing at select retailers and suppliers and B-to-B connections. Members of the following partner associations have a reciprocal relationship with the CleanTech Alliance, giving them access to all member benefits including the CleanTech Alliance Health Trust:
 - » [Roofing Contractors Association of Washington](#)
 - » [Evergreen Rural Water of Washington](#)
 - » [Washington Solar Energy Industries Association](#)

About the CleanTech Alliance Health Trust, continued



- The Trust is committed to making administration of your company benefits easy and painless. We provide consolidated billing and a web-based employer management platform featuring online enrollment and invoicing, and access to plan booklets, summaries and forms for ease of administration.
- Employers have a single point of contact for all types of plan administration including customer service, billing, eligibility and COBRA services, included at no additional cost.
- Care advice is delivered in a variety of ways, based on member preference: in person, on the phone or via telemedicine.
- Virtual care provides easy and convenient access to health services outside a clinical setting.

It's Accessible

- CleanTech Alliance hosts events and seminars regarding how to successfully run and manage your business, including human resources-related topics such as wellness in the workplace.
- The CleanTech Alliance Health Trust benefit platform enables employers to offer leading insurance benefit options that meet the demand for growing companies, with comprehensive benefits for as few as two employees or as many as 199.
- CleanTech Alliance helps growing energy, environmental and sustainability firms in Washington state recruit and retain top talent with competitive and affordable health and wellness benefits.
- Premera is the contracted medical carrier for the CleanTech Alliance Health Trust to provide comprehensive medical insurance to prospective employers in the Pacific Northwest. Benefit plans go where your team goes — across the country and around the world — so your employees can feel confident knowing they have one of the largest provider networks in the world at their service.
- Efficient product designs allow for an easy insurance buying experience with predictable out-of-pocket expenses for employees and their dependents.

The following pages give a detailed summary of the unique products and services offered by CleanTech Alliance Health Trust.



Membership Benefits

About the CleanTech Alliance

[CleanTech Alliance](#) drives clean technology innovation and job growth to advance our economy. The 1,100-and-growing member organizations represent many different industries, business models, technologies and services. This diversity creates valuable connections that make a difference for CleanTech Alliance members, the economy and our planet through policy advocacy, entrepreneur support programs, business services and signature events that educate, enlighten and enhance profitability.

If you want to enjoy a collaborative culture that provides fuel for sustainable businesses in every industry, the CleanTech Alliance is where you need to be.

CleanTech Memberships

Ask any CleanTech Alliance member about the benefit of belonging and almost everyone will say, "Because of the people you meet and the value they bring." It's empowering to connect with a large group of people who feel the same way you do about making cleantech happen in Washington state. The connections made and knowledge gained and shared through the Alliance has the potential to make Washington state the leader in the U.S. cleantech market.

Your company's membership in the Alliance provides the following benefits:

- Membership for all employees in your organization
- Discounted event and program registration prices for all employees
- Access to Alliance bimonthly members-only funding and promotion opportunity e-newsletters
- Access to new job and research opportunity board
- Committee membership, networking and professional development opportunities for all employees
- Company profile in the CleanTech Alliance online directory
- Opportunities for recognition at Alliance Signature Events
- Access to members-only workshops, meet and greets and programs
- Preferred consideration for sponsorship and hosting opportunities
- May be nominated to the Board of Directors
- Eligible for features, executive Q-and-A's and newsletter stories send to 18,000+ subscribers
- Speaking opportunities for company representatives

To learn more about membership benefits, go to the CleanTech website at CleanTechAlliance.org/Become-a-Member or call 206.389.6390.

Benefits Snapshot



Medical: Premera Blue Cross

- 19 unique medical plans to choose from paired with flexible networks that provide in-network coverage across the country
- Sustainable product suite provides deductible options of \$200 to \$5,000 with robust first-dollar benefits
- Durable product suite provides deductible options of \$500 to \$8,000 with favorable family deductible and out-of-pocket limits
- HSA plans provide a tax savings vehicle with easy-to-understand member cost-shares
- Diverse in-network virtual care options include 98point6, Doctor on Demand, Talkspace and Boulder Care, with many services provided at no cost to the member
- Enhanced rehab and acupuncture benefit provides 50% more annual visits than traditional plans
- Provider networks include BlueCard to accommodate employees across the country and while traveling abroad
- Mail order Rx provides convenience and member savings

Dental: Delta Dental of Washington

- Eight PPO plans including a voluntary plan and annual benefit maximums up to \$2,500; employers with 10 or more employees can pair a dental plan with family or child only orthodontia coverage
- Focus on preventive care, with all Class 1 diagnostic and preventive services covered in full and without reducing the annual benefit maximum

Vision: VSP Vision Care Inc.

- Nine vision plan variations to choose from that all include an annual exam; voluntary plan also available
- Voluntary Vision Plan available that matches Plan A in both benefits and price
- Optional riders provide additional coverage for Safety Eye Care or Computer VisionCare

Basic Life and AD&D, Disability, and Voluntary Life: Unum

- Basic Life: Options include flat benefit amounts, as well as multiples of salary
- Disability benefits and voluntary life coverage available to employers with 10 or more employees with generous voluntary life guarantee issue amount of \$180,000

Employee Assistance Program: Wellspring EAP

- Three-visit model included with all medical plans with optional six-visit buy-up option

Identity Protection: Allstate Identity Protection

- Protection Pro Plus plan can be offered to cover employee only or employee plus family

Premera Blue Cross has a history of helping generations of Washingtonians. Serving Washington state since 1933, Premera is a not-for-profit, independent licensee of the Blue Cross Blue Shield Association. We serve more than 2 million people – from individuals and families to members of Fortune 100 employer groups.

It is our purpose to improve our customers' lives by making healthcare work better. Which is why we offer a rich set of tools and resources to help our customers manage both their healthcare and costs. Check out what's new at Premera.

Support for smart healthcare decisions

Premera plans include consumer web-based tools and health-support programs. They help employees maintain good health and change unhealthy behavior.

All medical plans include these great support programs:

- **Find a Doctor:** Search doctors, clinics, cost estimates and more.
- **Virtual care:** Expanded in-network access includes:
 - » [98point6](#): Text-based primary/urgent care from a doctor, 24/7.
 - » [Doctor on Demand](#): Video and phone-based primary/urgent care and mental health therapy.
 - » [Talkspace](#): Video and text-based mental health therapy.
 - » [Boulder Care](#): Treatment for opioid use disorder and alcohol use disorder. Video visits and messaging with a therapist.
- **24-Hour NurseLine:** Free, confidential health advice from a registered nurse, available 24/7.
- **Pregnancy and newborn support:** BestBeginnings Maternity engages parents from pregnancy through newborn care with personalized tools and support that encourages discovering risks early.

Provider network built for value and quality

Premera Blue Cross offers a comprehensive network in Washington. The Premera network of doctors, hospitals, and other healthcare providers is designed to offer ready access to safe, effective, high-quality care at affordable prices. Our strong relationships with our provider partners help maximize healthcare dollars by:

- Focusing on quality care
- Helping control rising medical and prescription drug costs
- Providing resources for improved healthcare

When outside Washington, members can access Premera's national network of preferred providers, offering the same high standards of quality.

Plan Name	Deductible		Coinsurance		Office Visit Copay	Out-of-Pocket Maximum		Emergency Care ¹	Preventive Office Visits/Immunizations	Other Professional Diagnostic Imaging	Other Professional Diagnostic Laboratory/Pathology	Rx Cost Shares	
	Individual	Family	In Network	Out of Network		Individual	Family					Retail	Mail Order
Sustainable 200	\$200	\$600	0%	50%	\$25	\$9,600	\$200 copay, then 0% after deductible	Covered in Full	Covered in Full	Covered in Full	Covered in Full	\$10/\$30/\$60/\$250	\$20/\$60/\$60/\$500
Sustainable 250	\$250	\$750	10%	50%	\$25	\$9,750	\$200 copay, then 10% after deductible	Covered in Full	10%, deductible waived	10%, deductible waived	10%, deductible waived	\$10/\$30/\$60/\$250	\$20/\$60/\$60/\$500
Sustainable 300	\$300	\$900	20%	50%	\$30	\$12,900	\$200 copay, then 20% after deductible	Covered in Full	20%, deductible waived	20%, deductible waived	20%, deductible waived	\$10/\$35/\$70/\$250	\$20/\$70/\$70/\$500
Sustainable 500	\$500	\$1,500	20%	50%	\$30	\$13,500	\$200 copay, then 20% after deductible	Covered in Full	20%, deductible waived	20%, deductible waived	20%, deductible waived	\$10/\$35/\$70/\$250	\$20/\$70/\$70/\$500
Sustainable 750	\$750	\$2,250	20%	50%	\$35	\$14,250	\$200 copay, then 20% after deductible	Covered in Full	20%, deductible waived	20%, deductible waived	20%, deductible waived	\$10/\$35/\$70/\$250	\$20/\$70/\$70/\$500
Sustainable 1000	\$1,000	\$3,000	20%	50%	\$35	\$16,000	\$200 copay, then 20% after deductible	Covered in Full	20%, deductible waived	20%, deductible waived	20%, deductible waived	\$10/\$40/\$80/\$250	\$20/\$80/\$80/\$500
Sustainable 1500	\$1,500	\$4,500	20%	50%	\$35	\$16,850	\$200 copay, then 20% after deductible	Covered in Full	20%, deductible waived	20%, deductible waived	20%, deductible waived	\$10/\$40/\$80/\$250	\$20/\$80/\$80/\$500
Sustainable 2000	\$2,000	\$6,000	20%	50%	\$40	\$13,700	\$200 copay, then 20% after deductible	Covered in Full	20%, deductible waived	20%, deductible waived	20%, deductible waived	\$10/\$50/\$100/\$250	\$20/\$100/\$100/\$500
Sustainable 2500	\$2,500	\$7,500	20%	50%	\$40	\$13,700	\$200 copay, then 20% after deductible	Covered in Full	20%, deductible waived	20%, deductible waived	20%, deductible waived	\$10/\$50/\$100/\$250	\$20/\$100/\$100/\$500
Sustainable 3000	\$3,000	\$9,000	20%	50%	\$40	\$13,700	\$200 copay, then 20% after deductible	Covered in Full	20%, deductible waived	20%, deductible waived	20%, deductible waived	\$10/\$50/\$100/\$250	\$20/\$100/\$100/\$500
Sustainable 5000	\$5,000	\$12,700	20%	50%	\$40	\$13,700	\$200 copay, then 20% after deductible	Covered in Full	20%, deductible waived	20%, deductible waived	20%, deductible waived	\$10/\$50/\$100/\$250	\$20/\$100/\$100/\$500
Durable 500	\$500	\$1,000	10%	50%	\$25	\$5,000	\$250 copay, then 10% after deductible	Covered in Full	10%, deductible waived	10%, deductible waived	10%, deductible waived	\$10/\$50/\$100/50%	\$20/\$100/\$100/50%
Durable 1500	\$1,500	\$3,000	30%	50%	\$30	\$7,350	\$250 copay, then 30% after deductible	Covered in Full	30%, deductible waived	30%, deductible waived	30%, deductible waived	\$10/\$50/\$100/50%	\$20/\$100/\$100/50%
Durable 3500	\$3,500	\$7,000	30%	50%	\$40	\$7,350	\$250 copay, then 30% after deductible	Covered in Full	30%, deductible waived	30%, deductible waived	30%, deductible waived	\$10/\$50/\$100/50%	\$20/\$100/\$100/50%
Durable 6000	\$6,000	\$12,000	30%	50%	\$40	\$7,350	\$250 copay, then 30% after deductible	Covered in Full	30%, deductible waived	30%, deductible waived	30%, deductible waived	\$10/\$50/\$100/50%	\$20/\$100/\$100/50%
Durable 9000	\$9,000	\$18,000	0%	50%	\$40	\$8,000	\$250 copay, then 0% after deductible	Covered in Full	Covered in Full	Covered in Full	Covered in Full	\$10/\$50/\$100/50%	\$20/\$100/\$100/50%
HSA 2000	\$2,000	\$4,000	20%	50%	20% after deductible	\$6,550	20% after deductible	Covered in Full	20% after deductible	20% after deductible	20% after deductible	20% after deductible	20% after deductible
HSA 3000	\$3,000	\$6,000	20%	50%	20% after deductible	\$6,550	20% after deductible	Covered in Full	20% after deductible	20% after deductible	20% after deductible	20% after deductible	20% after deductible
HSA 5000	\$5,000	\$6,550	20%	50%	20% after deductible	\$6,550	20% after deductible	Covered in Full	20% after deductible	20% after deductible	20% after deductible	20% after deductible	20% after deductible

This benefit summary is not a contract or a complete explanation of covered services, exclusions, limitations, or reductions. Please refer to the benefit highlights and booklets for additional information.

¹Wave copay if admitted to inpatient facility

Manipulations - Spinal and other (12 visits PCY)

Acupuncture (HSA- 12 visits PCY/ PPO- 18 visits PCY)



CleanTech Alliance Washington Side by Side Comparison

(January 1, 2023 - December 31, 2023)

Discrimination is Against the Law

Premera Blue Cross (Premera) complies with applicable Federal and Washington state civil rights laws and does not discriminate on the basis of race, color, national origin, age, disability, sex, gender identity, or sexual orientation. Premera does not exclude people or treat them differently because of race, color, national origin, age, disability, sex, gender identity, or sexual orientation. Premera provides free aids and services to people with disabilities to communicate effectively with us, such as qualified sign language interpreters and written information in other formats (large print, audio, accessible electronic formats, other formats). Premera provides free language services to people whose primary language is not English, such as qualified interpreters and information written in other languages. If you need these services, contact the Civil Rights Coordinator. If you believe that Premera has failed to provide these services or discriminated in another way on the basis of race, color, national origin, age, disability, sex, gender identity, or sexual orientation, you can file a grievance with: Civil Rights Coordinator — Complaints and Appeals, PO Box 91102, Seattle, WA 98111, Toll free: 855-332-4535, Fax: 425-918-5592, TTY: 711, Email AppealsDepartmentInquiries@Premera.com. You can file a grievance in person or by mail, fax, or email. If you need help filing a grievance, the Civil Rights Coordinator is available to help you. You can also file a civil rights complaint with the U.S. Department of Health and Human Services, Office for Civil Rights, electronically through the Office for Civil Rights Complaint Portal, available at <https://ocrportal.hhs.gov/ocr/portal/lobby.jsf>, or by mail or phone at: U.S. Department of Health and Human Services, 200 Independence Ave SW, Room 509F, HHH Building, Washington, D.C. 20201, 1-800-368-1019, 800-537-7697 (TDD). Complaint forms are available at <http://www.hhs.gov/ocr/office/file/index.html>. You can also file a civil rights complaint with the Washington State Office of the Insurance Commissioner, electronically through the Office of the Insurance Commissioner Complaint Portal available at <https://www.insurance.wa.gov/file-complaint-or-check-your-complaint-status>, or by phone at 800-562-6900, 360-586-0241 (TDD). Complaint forms are available at <https://fortress.wa.gov/oic/onlineservices/cc/pub/complaintinformation.aspx>.

Language Assistance

ATENCIÓN: si habla español, tiene a su disposición servicios gratuitos de asistencia lingüística. Llame al 800-722-1471 (TTY: 711).

注意: 如果您使用繁體中文，您可以免費獲得語言援助服務。請致電 800-722-1471 (TTY: 711)。

CHÚ Ý: Nếu bạn nói Tiếng Việt, có các dịch vụ hỗ trợ ngôn ngữ miễn phí dành cho bạn. Gọi số 800-722-1471 (TTY: 711).

주의: 한국어를 사용하시는 경우, 언어 지원 서비스를 무료로 이용하실 수 있습니다. 800-722-1471 (TTY: 711) 번으로 전화해 주십시오.

ВНИМАНИЕ: Если вы говорите на русском языке, то вам доступны бесплатные услуги перевода. Звоните 800-722-1471 (телетайп: 711).

PAUNAWA: Kung nagsasalita ka ng Tagalog, maaari kang gumamit ng mga serbisyo ng tulong sa wika nang walang bayad. Tumawag sa 800-722-1471 (TTY: 711).

УВАГА! Якщо ви розмовляєте українською мовою, ви можете звернутися до безкоштовної служби мовної підтримки.

Телефонуйте за номером 800-722-1471 (телетайп: 711).

ប្រយ័ត្ន: បើសិនជាអ្នកនិយាយភាសាខ្មែរ, សេវាជំនួយផ្នែកភាសាដោយមិនគិតថ្លៃនឹងត្រូវបានផ្តល់ឱ្យអ្នក។ ចូរទូរស័ព្ទ 800-722-1471 (TTY: 711)។

注意事項: 日本語を話される場合、無料の言語支援をご利用いただけます。800-722-1471 (TTY:711) まで、お電話にてご連絡ください。

ማስታወሻ: የሚናገሩት ቋንቋ አማርኛ ከሆነ የትርጉም እርዳታ ድርጅቶች፣ በነጻ ሊያግዝዎት ተዘጋጅተዋል። ወደ ሚከተለው ቁጥር ይደውሉ 800-722-1471 (መስማት ለተሳናቸው: 711)።

XIYEEFFANNA: Afaan dubbattu Oroomiffa, tajaajjila gargaarsa afaanii, kanfaltiidhaan ala, ni argama. Bilbilaa 800-722-1471 (TTY: 711).

ملحوظة: إذا كنت تتحدث اذكر اللغة، فإن خدمات المساعدة اللغوية تتوافر لك بالمجان. اتصل برقم 800-722-1471 (رقم هاتف الصم والبكم: 711).

ਧਿਆਨ ਦਿਓ: ਜੇ ਤੁਸੀਂ ਪੰਜਾਬੀ ਬੋਲਦੇ ਹੋ, ਤਾਂ ਭਾਸ਼ਾ ਵਿੱਚ ਸਹਾਇਤਾ ਸੇਵਾ ਤੁਹਾਡੇ ਲਈ ਮੁਫਤ ਉਪਲਬਧ ਹੈ। 800-722-1471 (TTY: 711) 'ਤੇ ਕਾਲ ਕਰੋ।

ACHTUNG: Wenn Sie Deutsch sprechen, stehen Ihnen kostenlos sprachliche Hilfsdienstleistungen zur Verfügung. Rufnummer: 800-722-1471 (TTY: 711).

ໂປດຂາບ: ຖ້າວ່າ ທ່ານເວົ້າພາສາ ລາວ, ການບໍລິການຊ່ວຍເຫຼືອດ້ານພາສາ, ໃດຍບໍ່ເສັຽຄ່າ, ແມ່ນມີພ້ອມໃຫ້ທ່ານ. ໂທ 800-722-1471 (TTY: 711).

ATANSYON: Si w pale Kreyòl Ayisyen, gen sèvis èd pou lang ki disponib gratis pou ou. Rele 800-722-1471 (TTY: 711).

ATTENTION: Si vous parlez français, des services d'aide linguistique vous sont proposés gratuitement. Appelez le 800-722-1471 (ATS: 711).

UWAGA: Jeżeli mówisz po polsku, możesz skorzystać z bezpłatnej pomocy językowej. Zadzwoń pod numer 800-722-1471 (TTY: 711).

ATENÇÃO: Se fala português, encontram-se disponíveis serviços linguísticos, grátis. Ligue para 800-722-1471 (TTY: 711).

ATTENZIONE: In caso la lingua parlata sia l'italiano, sono disponibili servizi di assistenza linguistica gratuiti. Chiamare il numero 800-722-1471 (TTY: 711).

توجہ: اگر بہ زبان فارسی گفتگو می کنید، تسهیلات زبانی بصورت رایگان برای شما فراهم می باشد. با 800-722-1471 (TTY: 711) تماس بگیرید.

Dental Plan

Delta Dental of Washington



Delta Dental of Washington

For more than 60 years, we've always focused on what truly matters – healthy smiles. It drives everything we do.

We are a founding member of the nationwide Delta Dental Plans Association, and administer dental benefits to over 2.8 million members in state and nationwide, more than any other dental benefits provider.

Our unique two-tier Delta Dental PPOSM and Delta Dental Premier® networks offer the access to the most quality dentists – more than 4,400 in Washington State and more than 152,000 across the country. This is a benefit that no other company can match.

Regular dental exams and cleanings are key to keeping your smile healthy. Visit your dentist regularly. They'll keep you on the road to a lifelong, healthy smile.

MySmile® personal benefits center is your patient portal at [DeltaDentalWA.com](https://www.DeltaDentalWA.com).

It's customized to your benefits information and allows you to:

- Print your ID card
- View your coverage
- Get instant out-of-pocket cost estimates with MySmile Cost Genie®
- Endorse your favorite dentist and help others find theirs
- Sign up for paperless Explanation of Benefits (EOB) via email

Have a question? Give us a call at 800-554-1907 or send an email to cservice@deltadentalwa.com. We're happy to help.

Dental Plan



Delta Dental of Washington

Delta Dental of Washington

	Plan A	Plan B	Plan C	Plan D	Plan E - Incentive	Plan F - Incentive	*Plan G - Voluntary	*Plan H
Class I - Diagnostic & Preventive Exams, X-rays, Cleanings, Fluoride, Sealants	100%	100%	100%	100%	Start at 100% down to 80%	Start at 100% down to 80%	100%	100%
Class II - Restorations/ Fillings, Endodontics, Periodontics, Oral Surgery	90%	90%	80%	80%	Start at 90% down to 70%	Start at 90% down to 70%	80%	80%
Class III – Crowns, Dentures & Partials, Bridges, Implants	50%	50%	50%	50%	50%	50%	50%	0%
Annual Maximum Per Person Benefit Period: (January 1 – December 31)	\$1,000	\$2,000	\$1,500	\$2,000	\$1,500	\$2,500	\$1,500	\$750
Deductible (Waived on Class I) Per person/ per benefit period	\$25/ person	\$25/ person	\$50/ person	\$50/ person	\$50/ person	\$50/ person	\$50/ person	\$50/ person
Annual family maximum	\$75/ family	\$75/ family	\$150/ family	\$150/ family	\$150/ family	\$150/ family	\$150/ family	\$150/ family

*Groups enrolling on Dental Plan G or Plan H are not eligible for either orthodontia rider.

Optional Orthodontic Benefits Available

- 1. Child Only:** 50% to \$1,000 lifetime maximum
- 2. Family:** 50% to \$2,000 lifetime maximum for adults and dependent children

Please Note: This is a brief summary of in-network benefits only and does not constitute a contract.

A Look At Your VSP Vision Coverage

With VSP and Omnitrade, your health comes first.




Enroll in VSP® Vision Care to get access to savings and personalized vision care from a VSP network doctor for you and your family.


Value and savings you love.

Save on eyewear and eye care when you see a VSP network doctor. Plus, take advantage of Exclusive Member Extras which provide offers from VSP and leading industry brands totaling over \$3,000 in savings.

Provider choices you want.

 Maximize your benefits at a Premier Program location, which is part of our incredible network of doctors.

Shop online and connect your benefits.

 Eyeconic® is the preferred VSP online retailer where you can shop in-network with your vision benefits. See your savings in real time when you shop over 70 brands of contacts, eyeglasses, and sunglasses.

Quality vision care you need.

You'll get great care from a VSP network doctor, including a WellVision Exam®. An annual eye exam not only helps you see well, but helps a doctor detect signs of eye conditions and health conditions, like diabetes and high blood pressure.

Using your benefit is easy!

Create your member account at vsp.com to view your in-network coverage, find the VSP network doctor who's right for you, and discover savings with Exclusive Member Extras. At your appointment, just tell them you have VSP.


vision care

More Ways
to Save

Extra

\$20

to spend on

Featured Frame Brands†

bebe

CALVIN KLEIN

COLE HAAN

FLEXON

LACOSTE



NINE WEST
EYEWEAR

See all brands and offers
at vsp.com/offers.

+

Up to

40%

Savings on
lens enhancements‡

Enroll through your employer today.
Contact us: **800.877.7195** or vsp.com

†Only available to VSP members with applicable plan benefits. Frame brands and promotions are subject to change.

‡Savings based on doctor's retail price and vary by plan and purchase selection; average savings determined after benefits are applied. Ask your VSP network doctor for more details.

*Coverage with a retail chain may be different or not apply.

VSP guarantees member satisfaction from VSP providers only. Coverage information is subject to change. In the event of a conflict between this information and your organization's contract with VSP, the terms of the contract will prevail. Based on applicable laws, benefits may vary by location. In the state of Washington, VSP Vision Care, Inc., is the legal name of the corporation through which VSP does business. TruHearing is not available directly from VSP in the states of California and Washington.

Your VSP Vision Benefits Summary

Omnitrade and VSP provide you with a choice of affordable vision plans. Choose the eye care essentials, or upgrade to give your eyes extra love.

Provider Network:

VSP Choice

Effective Date:

01/01/2023



BENEFIT	DESCRIPTION	COPAY	FREQUENCY
CHOICE PLAN A COVERAGE WITH A VSP PROVIDER			
WELLVISION EXAM	• Focuses on your eyes and overall wellness	\$25 for Exam and Glasses	Every 12 months
PRESCRIPTION GLASSES			
FRAME*	<ul style="list-style-type: none"> \$145 Featured Frame Brands allowance \$125 frame allowance \$70 Costco frame allowance 	Combined With Exam	Every 24 months
LENSES	<ul style="list-style-type: none"> Single vision, lined bifocal, and lined trifocal lenses Impact-resistant lenses for dependent children 	Combined With Exam	Every 24 months
CONTACTS (INSTEAD OF GLASSES)	<ul style="list-style-type: none"> \$125 allowance for contacts; copay does not apply Contact lens exam (fitting and evaluation) 	Up to \$60	Every 24 months
CHOICE PLAN B COVERAGE WITH A VSP PROVIDER			
WELLVISION EXAM	• Focuses on your eyes and overall wellness	\$25 for Exam and Glasses	Every 12 months
PRESCRIPTION GLASSES			
FRAME*	<ul style="list-style-type: none"> \$200 Featured Frame Brands allowance \$180 frame allowance \$100 Costco frame allowance 	Combined With Exam	Every 24 months
LENSES	<ul style="list-style-type: none"> Single vision, lined bifocal, and lined trifocal lenses Impact-resistant lenses for dependent children 	Combined With Exam	Every 12 months
CONTACTS (INSTEAD OF GLASSES)	<ul style="list-style-type: none"> \$180 allowance for contacts; copay does not apply Contact lens exam (fitting and evaluation) 	Up to \$60	Every 12 months
CHOICE PLAN C COVERAGE WITH A VSP PROVIDER			
WELLVISION EXAM	• Focuses on your eyes and overall wellness	\$25 for Exam and Glasses	Every 12 months
PRESCRIPTION GLASSES			
FRAME*	<ul style="list-style-type: none"> \$220 Featured Frame Brands allowance \$200 frame allowance \$110 Costco frame allowance 	Combined With Exam	Every 12 months
LENSES	<ul style="list-style-type: none"> Single vision, lined bifocal, and lined trifocal lenses Impact-resistant lenses for dependent children 	Combined With Exam	Every 12 months
LENS ENHANCEMENTS	<ul style="list-style-type: none"> Anti-glare coating Progressive lenses (all types) 	\$35 \$55	Every 12 months
CONTACTS (INSTEAD OF GLASSES)	<ul style="list-style-type: none"> \$200 allowance for contacts; copay does not apply Contact lens exam (fitting and evaluation) 	Up to \$60	Every 12 months
ALL PLAN OPTIONS*			
ESSENTIAL MEDICAL EYE CARE	<ul style="list-style-type: none"> Retinal screening for members with diabetes covered-in-full Additional exams and services beyond routine care to treat immediate issues from pink eye to sudden changes in vision or to monitor ongoing conditions such as dry eye, diabetic eye disease, glaucoma, and more. Coordination with your medical coverage may apply. Ask your VSP network doctor for details. 	\$20 per exam	Available as needed
ADDITIONAL SAVINGS	Glasses and Sunglasses <ul style="list-style-type: none"> Discover all current eyewear offers and savings at vsp.com/offers. 20% savings on unlimited additional pairs of prescription or non-prescription glasses/sunglasses, including lens enhancements, from a VSP provider within 12 months of your last WellVision Exam. 		
	Laser Vision Correction <ul style="list-style-type: none"> Average of 15% off the regular price or 5% off the promotional price; discounts available at contracted facilities. 		
	Exclusive Member Extras <ul style="list-style-type: none"> Save up to 60% on digital hearing aids with TruHearing. Visit vsp.com/offers/special-offers/hearing-aids for details. Contact lens rebates, lens satisfaction guarantees, and more offers at vsp.com/offers. Everyday savings on entertainment, health and wellness, travel, and more with VSP Simple Values. 		

*Safety Eyewear Plan Rider (employee-only coverage) is available for an additional cost for all plans.

*Computer VisionCare (employee-only coverage) is available with Plan B and Plan C for an additional cost.

To learn about your privacy rights and how your protected health information may be used, see the VSP Notice of Privacy Practices on [vsp.com](https://www.vsp.com).

©2022 Vision Service Plan. All rights reserved.
VSP, Eyeconic, and WellVision Exam are registered trademarks of Vision Service Plan. Flexon is a registered trademark of Marchon Eyewear, Inc.

Classification: Restricted

Your VSP Vision Benefits Summary

VSP's EXAM PLUS Plan provide you with an affordable vision plan.

PROVIDER NETWORK:

VSP Choice



BENEFIT	DESCRIPTION	COPAY	FREQUENCY
Your Coverage with a VSP Provider			
WELLVISION EXAM	<ul style="list-style-type: none"> Focuses on your eyes and overall wellness 	\$10	Every 12 months
ESSENTIAL MEDICAL EYE CARE	<ul style="list-style-type: none"> Retinal screening for members with diabetes Additional exams and services beyond routine care to treat immediate issues from pink eye to sudden changes in vision or to monitor ongoing conditions such as dry eye, diabetic eye disease, glaucoma, and more. Coordination with your medical coverage may apply. Ask your VSP doctor for details. 	\$0 per screening \$20 per exam	Available as needed
EXTRA SAVINGS	Glasses and Sunglasses <ul style="list-style-type: none"> 20% savings on complete pair of prescription glasses and sunglasses, including lens enhancements, from any VSP provider within 12 months from your last WellVision Exam. 		
	Contacts <ul style="list-style-type: none"> 15% savings on a contact lens exam (fitting and evaluation) 		
	Laser Vision Correction <ul style="list-style-type: none"> Average 15% off the regular price or 5% off the promotional price; discounts only available from contracted facilities 		

YOUR COVERAGE GOES FURTHER IN-NETWORK

With so many in-network choices, VSP makes it easy to get the most out of your benefits. You'll have access to preferred private practice, retail, and online in-network choices. Log in to vsp.com to find an in-network provider.

[†]Only available to VSP members with applicable plan benefits. Frame brands and promotions are subject to change.

[‡]Savings based on doctor's retail price and vary by plan and purchase selection; average savings determined after benefits are applied. Ask your VSP network doctor for more details.

⁺Coverage with a retail chain may be different or not apply.

VSP guarantees member satisfaction from VSP providers only. Coverage information is subject to change. In the event of a conflict between this information and your organization's contract with VSP, the terms of the contract will prevail. Based on applicable laws, benefits may vary by location. In the state of Washington, VSP Vision Care, Inc., is the legal name of the corporation through which VSP does business. TruHearing is not available directly from VSP in the states of California and Washington.

©2022 Vision Service Plan. All rights reserved.

VSP, Eyeconic, and WellVision Exam are registered trademarks of Vision Service Plan. Flexon and Dragon are registered trademarks of Marchon Eyewear, Inc. All other brands or marks are the property of their respective owners. 102898 VCCM

Classification: Restricted

VSP Computer VisionCare Plan



Nearly 60% of adults report experiencing symptoms of digital eye strain, also known as Computer Vision Syndrome. People spending two or more continuous hours at a computer or using a digital screen device every day are most at risk for this.¹



Many people aren't aware they're experiencing Computer Vision Syndrome (CVS), which may include one or more of the following symptoms:

- Neck and shoulder pain
- Headaches
- Irritated eyes
- Blurred or double vision

Ask your VSP® network doctor about eyewear specifically designed to reduce the impact of using digital devices, with features such as anti-reflective and blue light-filtering capabilities.

YOUR VSP COMPUTER VISIONCARESM PLAN COVERAGE WITH A VSP NETWORK DOCTOR*

Eye Exam	<ul style="list-style-type: none">• A fully covered, annual comprehensive WellVision Exam^{#2}• Exam designed to detect eye health and vision issues caused by computer and digital device use
Eyewear	<ul style="list-style-type: none">• Frames and lenses fully covered up to your retail allowance³• Up to 20% savings on the amount above your retail frame allowance³• Savings on additional pairs of prescription glasses

*Register and log in to vsp.com to review your benefit information. Based on applicable laws; benefits may vary by location.

Learn more at vsp.com | 800.877.7195

1. The Vision Council Shines Light on Protecting Sight - And Health - In a Multi-Screen Era, Vision Council, January 2019. 2. Less any applicable copay. 3. Your prescription for computer glasses will be different from other prescription glasses.

©2022 Vision Service Plan. All rights reserved.
VSP and WellVision Exam are registered trademarks, and Computer VisionCare Plan is a service mark of Vision Service Plan.
All other brands or marks are the property of their respective owners. 103687 VCCM

Your Safety Eye Care Benefits Summary



Get access to the best in eye care and eyewear with Omnitrade and VSP® Vision Care.

As a member, you'll receive access to care from great eye doctors, quality eyewear, and the affordability you deserve, all at the lowest out-of-pocket costs. With **the Safety Eye Care Plan**, you get an affordable benefit that includes a fully covered safety frame from the Safety Eyewear collection, that meets current impact protection standards for maximum safety.

Using your VSP benefit is easy.

- **Create an account at vsp.com.** Once your plan is effective, review your benefit information.
- **Find an eye doctor who's right for you.** Visit vsp.com or call 800.877.7195.
- **At your appointment, tell them you have VSP.** There's no ID card necessary. If you'd like a card as a reference, you can print one on vsp.com.

That's it! We'll handle the rest—there are no claim forms to complete when you see a VSP network doctor.

Plan Information

VSP Provider Network: VSP Choice

Coverage Effective: 01/01/2018

Safety Eyecare Plan

Benefit	Description	Copay
Your Coverage with a VSP Provider		
Safety Exam	<ul style="list-style-type: none"> • Determines your needs for eye protection at work • Frequency matches selected plan 	\$0 for exam and glasses
Prescription Lenses	<ul style="list-style-type: none"> • Certified according to ANSI (American National Standards Institute) requirements • Single vision, lined bifocal, and lined trifocal lenses • Frequency matches selected plan 	Combined with exam
Safety Eyewear Frame	<ul style="list-style-type: none"> • \$65 frame allowance when you choose a safety frame from your VSP network doctor's Safety Eyewear collection • Certified according to ANSI requirements • 20% savings on the amount over your allowance • Frequency matches selected plan 	Combined with exam
Extra Savings	<p>Additional Safety Glasses</p> <ul style="list-style-type: none"> • 20% savings on additional pairs of glasses or sunglasses, including lens enhancements, from the same VSP provider. <p>Laser Vision Correction</p> <ul style="list-style-type: none"> • Average 15% off the regular price or 5% off the promotional price; discounts only available from contracted facilities 	

Keep your eyes safe with Safety Eye Care.

Visit vsp.com or call 800.877.7195 to find a VSP network doctor who carries the Safety Eyewear collection.

Basic, Voluntary Life and AD&D



Unum

	Plan 1	Plan 2	Plan 3	Plan 4
Benefit Amount	\$20,000	\$50,000	1 x Annual Salary to \$100,000	1 x Annual Salary to \$200,000
Guarantee Issue	\$20,000	\$50,000	\$100,000	\$200,000
Minimum Group Size	2 Employees	10 Employees	10 Employees	10 Employees

Voluntary Life and AD&D	
Employee	Up to 5 times salary – Not to exceed \$500,000 in \$10,000 increments *Guarantee Issue Amount: \$180,000 for groups 10+ lives
Spouse	Up to 100% of employee coverage – Not to exceed \$500,000 in \$5,000 increments *Guarantee Issue Amount: \$25,000 for groups 10+ lives
Child(ren)	Up to 100% of employee coverage – Not to exceed \$10,000 in \$2,000 increments *Guarantee Issue Amount: \$10,000 for groups 10+ lives
Premium	Term life premium rates are age-banded and based on tobacco use. AD&D coverage is optional.

This Life and AD&D Comparison of Plans is a brief summary of benefits. For exact details of coverage, including limitations and exclusions, please refer to the applicable contract or booklet.

Employee Assistance Program



For support
1-866-607-4535
wellspringeap.org

USERNAME:
Omnitrade

A service provided by



CONFIDENTIAL
PROFESSIONAL
CONVENIENT
AVAILABLE 24/7

A benefit paid for by your
company through
Omnitrade

Your EAP is a confidential & professional resource—available 24/7—paid for by your company and available to you and eligible dependents without cost. Benefits include:

COUNSELING ASSESSMENTS

Up to 3 in-person meetings with a counselor.

LEGAL SERVICES

Free initial 30-minute phone consultation; ongoing consultations with a lawyer at 25% off attorney's regular fees; unlimited access to do-it-yourself legal documents online.

FINANCIAL SERVICES

Free initial 30-minute phone consultation, and access to financial calculators and resource documents.

ID THEFT VICTIM RESOURCES

Free initial 60-minute phone consultation, ID theft response kit, and prevention information.

DAILY LIVING INFORMATION SERVICES

Unlimited phone or live chat consultations/requests for finding consumer services and resources.

DISCOUNTS & SAVINGS CENTER

Access to discounts on travel, entertainment, dining, electronics, apparel, and other consumer services.

CHILDCARE & PARENTING RESOURCES

Unlimited phone or live chat consultations.

OLDER ADULT & ELDERCARE RESOURCES

Unlimited phone or live chat consultations

WEBSITE ACCESS

Unlimited access to online resources including:

- Live Chat with a resource consultant (for Childcare, Eldercare & Daily Living)
- Online referral request
- Skill builders/online trainings
- Well-being & productivity content
- Monthly live & on-demand webinars
- Search tools

SUBSCRIPTIONS

Monthly emails featuring the webinar of the month, spotlight on an EAP benefit, and a feature article on well-being or productivity, with direct links to the website.

WELLSPRING STRESS CENTER™

Unlimited access to an online stress management and prevention center, including instant relief tools and long-term solutions.

IN-THE-MOMENT SUPPORT

24/7 access to a professional, masters-level therapist who will help you manage your distress, create a plan of action, & provide resources (which may include referrals for further services).

COUNSELING ASSESSMENTS Get help for concerns related to addiction, anxiety & depression, family, relationships, communication, divorce, domestic violence, eating disorders, gambling, grief & loss, stress management, work concerns, motivation and more.

LEGAL SERVICES Consult with an attorney about issues related to financial matters, criminal charges, estate planning, civil disputes, taxes, immigration & naturalization, guardianship & custody, name changes, child support, property boundary disputes, adoption and more.

FINANCIAL SERVICES Consult with a financial counselor about matters related to credit counseling, tax planning, college funding, charitable giving, business services, debt and budgeting assistance, retirement planning, estate conservation, IRA funding, pensions, 401Ks and more.

ID THEFT VICTIM RESOURCES Get assistance with emergency response, restoring identity and good credit, steps to dispute fraudulent debts, how to communicate with creditors & collection agencies, financial counsel, and more.

DAILY LIVING INFORMATION RESOURCES Connect with a Daily Living consultant to get help with information, listings or resources related to home maintenance & repair, travel & relocation, recreation, pet care, dining & entertainment, event planning, volunteering, family activities and more.

DISCOUNTS & SAVINGS CENTER Shop quality name brands at discounts of 25 to 70% off regular retail prices. Find deals on restaurants, travel, auto, electronics, phones, flowers and gifts, taxes, tickets (movie, theatre, theme parks & sports), apparel, and home (décor, appliances, home improvement, etc.), and more.

CHILDCARE & PARENTING RESOURCES Connect with a childcare/parenting consultant about finding resources related to infant through school-age care, back-up care, summer camps, education & tutoring, special needs, parenting resources, lactation support, adoption support and more.

OLDER ADULT & ELDERCARE RESOURCES Connect with an older adult/eldercare consultant about resources & information needs related to senior services, housing options, caregiving support, geriatric specialists, transportation services, activities, and more.

WEBSITE ACCESS Services, information and resources at your fingertips 24 hours every day. Learn about your benefits, find access points to all services, chat live with a childcare, eldercare or daily living specialist, send an online referral request, and explore well-being and productivity content presented in a variety of media formats.

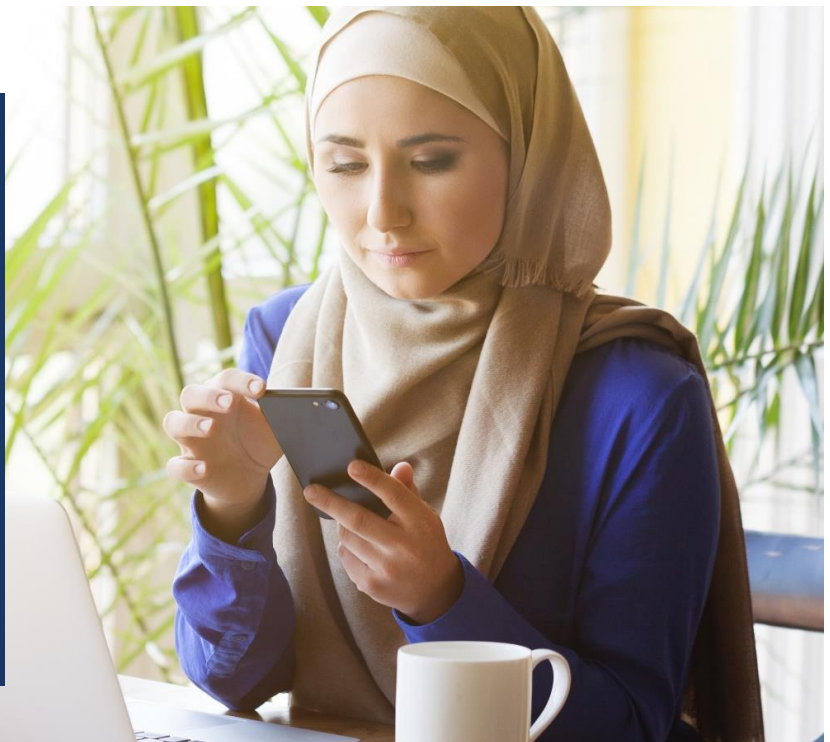
SUBSCRIPTIONS Complimentary and optional subscription to a monthly email that delivers access to monthly live webinars, information about benefit components and a well-being or productivity related article. The subscription includes The Source™ quarterly newsletter and EAP Response™ - which contains helpful information whenever a high-impact traumatic or catastrophic event happens in the community or around the world.

WELLSPRING STRESS CENTER™ Access instant relief tools, take a stress assessment and find out your Stress Number®, identify your stress triggers and learn ways to manage, build resilience with a stress management platform called the Oxygen Plan™.

IN-THE-MOMENT SUPPORT Our phones are answered by a professional team of masters-level clinicians, who can help you manage your distress, create a plan of action, and provide resources (which may include referrals for further services). **If you are in a life-threatening emergency, call 911 immediately.**



Talk to a counselor anytime, anywhere—on your computer, tablet, or smartphone, with your BetterHelp benefit, available through Wellspring EAP.



Access your BetterHelp benefit by calling Wellspring EAP at 1-866-607-4535

ELIGIBILITY

This service can be used for individual and couples counseling. It is not appropriate for children under 13-years-old, those in crisis, or family therapy.

WHAT IS COVERED?

Your EAP sessions can be used for BetterHelp in the same way you would use it for traditional counseling. Live/scheduled meetings count as 1 session, and unlimited asynchronous text over a period of 1 week counts as 1 session.

HOW DOES IT WORK?

To access your BetterHelp benefit, call the Wellspring EAP access line. Going directly to the BetterHelp website without calling Wellspring will not activate the benefit.

When you call, a Wellspring EAP counselor will assess your concerns to determine whether online counseling is clinically appropriate. If you don't meet the criteria, you will be offered a traditional counseling referral. Otherwise, upon qualification, you will immediately receive an email with instructions to complete the signup process.

You can expect to be connected with a BetterHelp therapist within an average of 48 hours.

HOW DO I COMMUNICATE WITH MY THERAPIST?

You can engage with your BetterHelp therapist in four different ways:

- **Messaging:** (Unscheduled) Message your therapist anytime from anywhere (1 week of unlimited, unscheduled texts counts as 1 session)
- **Chat:** (Live & scheduled) Text conversations with your counselor in real-time (counts as 1 session)
- **Phone:** (Live & scheduled) Talk with your counselor over the phone (counts as 1 session)
- **Video:** (Live & scheduled) Talk with your counselor in a virtual face-to-face setting (counts as 1 session)

WHAT IF I CHANGE MY MIND ABOUT BETTERHELP?

Simply call Wellspring EAP within 30 days of accessing services to be re-referred. Your access to BetterHelp will terminate and you will receive a referral to traditional in-person services from Wellspring EAP.

Identity Protection



Allstate Identity Protection

Allstate Identity Protection Pro Plus

Ready to digitize your business, protecting against whatever new challenges tomorrow may bring?

Identity Protection is one of the fastest growing voluntary benefits today. While it may be labeled “voluntary,” given recent surges in fraud and identity theft, identity protection benefits feel more important than ever.

Through the CleanTech Alliance Health Trust, members now have access to Protection Pro Plus, an Allstate Identity Protection plan that can be offered to cover employee only or employee plus family. The plan offers a generous definition of family, using “under roof or under wallet” as its guideline.

Protection Pro Plus includes:

- Identity monitoring
- Credit monitoring
- Remediation
- Reporting

Protection Pro Plus is a non-taxable, non-reportable benefit, meaning employers can deduct any cost of offering this service to their employees, when enrolled as employer paid.

To learn more, download the [Allstate Identity Protection brochure](#) or email CleanTech@advprofessionals.com.

About the Administrative Platform



OmniTrade

Supporting Washington businesses to create a better community

OmniTrade is an administrative platform that connects employers, vendors, third-party administrators, and professionals under one platform for all enrollment, fulfillment, compliance, insurance, and related resource requirements. An ever-changing marketplace requires tried and true partnerships, and OmniTrade's administrative efficiencies and flexibility enable us to deliver innovative products and services, while maintaining high retention and client satisfaction.

Flexibility

OmniTrade was designed to be robust enough to manage all aspects of administration while being flexible enough to meet the unique needs of participating companies. This critical feature provides scalable solutions for organizations of different sizes and sophistication, and allows us to integrate new technology, partnerships, and best practices for the betterment of our clients in a seamless and thoughtful manner. Our partners have come to rely on our proactive approach to expected challenges, while creating alternative solutions for unexpected marketplace changes.

Innovation

As a fully integrated platform, OmniTrade is a catalyst for innovation, setting new industry standards, sharing expertise, fostering collaboration, and delivering key business services. This ensures Washington state-based businesses are advancing not only their economic value, but their global impact.

Service

We understand our stakeholder's business needs require a 24/7 platform that can perform transactions and deliver solutions on demand. Providing web-based collateral and reference materials, access to online enrollment, and electronic premium payment options, allows OmniTrade resources to be available in "real time." The ability to provide solutions without any lapse in support is concurrent with the service OmniTrade has become synonymous with.

About the Third-Party Administrator



Vimly Benefit Solutions

The administration of employee benefits plans requires a commitment to service.

Employers, employees, trustees, vendors and advisors all require input and dedication from a third-party administrator. It is the administrator's responsibility to ensure that the flow of information to all parties is constant, timely and accurate. The administrator must act as primary liaison between plan participants and all other ancillary participants of the Trust.

Client Support

Vimly Benefit Solutions is known for establishing a new level of customer service. Dedicated account teams deliver exceptional service, beginning with onboarding each employer. Vimly brings together all the resources and expertise to support your day-to-day needs.

What They Do

Enrollment & Eligibility

A one-stop shop enrollment platform for managing employee benefits where data is securely transferred to carrier partners automatically.

Consolidated Billing and Payment

Consolidated billing allows for multiple carriers and coverages to be billed on a single invoice. Vimly processes payment and ensures carriers and vendors are paid timely.

Commission, Reporting and Payment

Commission reporting and payment services are fully integrated with this service offering. Vimly has the ability to manage complex commission structures within a group, by coverage type, by carrier and by broker status.

COBRA Administration

Vimly provides full service COBRA administration with dedicated customer service and support. All required notices and communications, monthly billing, customer support, annual renewal and plan set-up are included in this service.

Compliance Services

Vimly provides compliance administration services in accordance with all federal and state regulatory requirements such as ERISA, HIPAA, COBRA and Health Care Reform. Vimly also provides required notices to employers for distribution to their employees such as, Medicare Part D Creditable Coverage, CHIPRA, Summary Annual Report and Summary of Benefits and Coverage.

Consumer-Directed Health Plan (CDHP) Administration

Employers may offer flexible spending or other CDHP Plans. In each case, Vimly conducts implementation, enrollment, debit card issuance, claim adjudication, participant reimbursements, and reporting to the plan sponsor and participants.

About the Third-Party Administrator, continued



Vimly Benefit Solutions

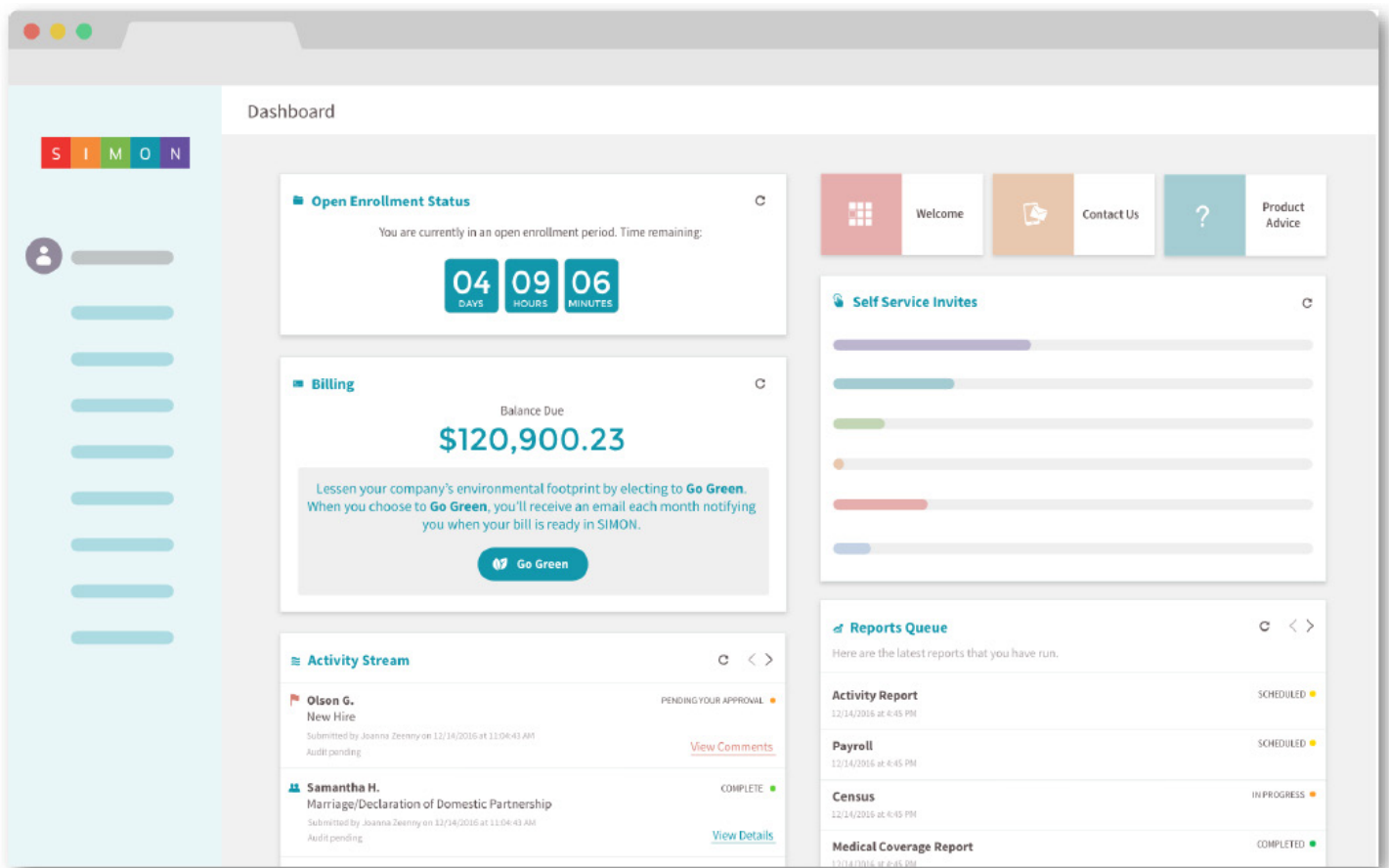
Vimly Technology

Simon® is Vimly's online Employee Benefits Management System – providing a centralized location where an HR administrator can manage enrollment, billing and payments. This makes the entire process more manageable and results in streamlined processes and efficiencies gained.

The platform is accessed through an intuitive web interface or portal that is 100 percent responsive whether on any desktop, tablet or mobile browser.

The SIMON Employer Portal enables employers, and their members, to enjoy efficient, error-free enrollment, as well as access to other tools powered by Vimly's market-leading benefits administration system. This includes powerful consolidated billing that delivers current, accurate and complete transaction reporting, and reliable, integrated data connections with your carriers.

SIMON supports electronic enrollment with nationally recognized medical, dental, vision, life and other voluntary benefit products.



About the Managing General Agent

Advanced Professionals Insurance & Benefit Solutions



Insurance &
Benefit Solutions

Advanced Professionals
Insurance & Benefit Solutions
1201 Third Avenue, Suite 800
Seattle, WA 98101 | 206.602.3558
CleanTech@advprofessionals.com

[Advanced Professionals Insurance & Benefit Solutions](#) manages several Association Health Plans, small-employer community-rated products, as well as large group-underwritten products. The team is committed to offering innovative solutions and unparalleled service. Through various marketplaces, Advanced Professionals Insurance & Benefit Solutions provides accredited producers with access to a comprehensive array of affordable healthcare products and services designed to meet the specific needs of their clients.

Driving Advanced Professionals Insurance & Benefit Solutions' success are two powerful and complementary components: technology and service. Our proprietary [AP Connect](#) producer portal is a web-based system uniquely designed for our wholesale model. As your end-to-end platform for RFPs, new business and renewals, AP Connect also provides access to each of our program-specific resources – including forms, plan summaries and booklets, producer reference tools, directories and more. The team is committed to a two-day turnaround on the more than 35,000 proposal requests received annually from 750 accredited producers across the state. The team not only delivers these proposals, but also handles the processing of all new business and renewals.

Advanced Professionals Insurance & Benefit Solutions is a dedicated team which, with more than 50 years of combined trust management experience, is a dynamic group of professionals accustomed to the ever-changing health insurance environment.

Your Advanced Professionals Insurance & Benefit Solutions team will assist with:

- Rate and product design assessment on behalf of employers and accredited producers
- Producer presentations and training
- Marketplace benchmarking
- Value-driven strategies
- Marketing
- High-level claim and service issues
- General advocacy for credentialed producers and companies

Advanced Professionals Insurance & Benefit Solutions takes pride in its ability to thrive in a fast-paced environment. Combining a creative approach with a “do-what-it-takes” attitude is what differentiates this team from the competition.

Plan Sponsor



CleanTech Alliance

CleanTechAlliance.com

Partner Associations



RCAW.com



ERWoW.com



WASEIA.org

Administrative Platform



OMNITRADE
HEALTH TRUST

OmnitradeBenefits.com

Managing General Agent



Insurance &
Benefit Solutions

AdvProfessionals.com